

# Annual Report Parish Name

## Tips:

- Use many images, NOT CLIP ART, of happy parishioners in ministry where ever possible.
- All data tables were copied from Excel for example only. Create your own table or import data as skill allows.
- Use small words versus big words. Example, use blood clot, not embolism
- Use short sentences versus long sentences.
- Avoid acronyms such as PSR. Do not assume people know what an acronym might mean..
- To reduce printing/postage, allow parishioners an email option.
- This document does not have to be perfect, but it should be remarkable. Make this report worth talking about. Put in an appropriate joke, did you know fact, or other interesting tidbit.
- If you need help, email: [ehaselhorst@dcdiocese.org](mailto:ehaselhorst@dcdiocese.org)

*“Mature disciples make a conscious decision to follow Jesus, no matter what the cost.”  
(U.S. Bishop’s Pastoral Letter on Stewardship)*

2006/2007 Actual						
Expenses	Parish	School	Combined	Budget 2006 Combined	Variation	Budget 2007/2008
Tithe to the Diocese	147,934		147,934	151,340	3,406	179,783
Salaries	266,754	793,231	1,059,985	1,098,200	38,215	1,167,880
Farm	48,160		48,160	49,100	940	56,100
Health Insurance & Payroll Taxes	67,975	139,705	207,680	221,900	14,220	231,200
Office Expenses	16,187	26,471	42,658	38,000	(4,658)	48,820
Property Insurance	67,696	24,999	92,695	104,000	11,305	103,000
Repairs, Utilities, Improvements	157,471	86,567	244,038	249,300	5,262	274,450
School Subsidy	727,612		727,612	746,750	19,138	1,044,180
Other Operating	76,361	52,659	129,020	144,350	15,330	149,510
<b>Total</b>	<b>1,576,150</b>	<b>1,123,632</b>	<b>2,699,782</b>	<b>2,802,940</b>		<b>3,254,923</b>

**For complete financial information, please reference our web sight [www.parishwebsite.com](http://www.parishwebsite.com)**

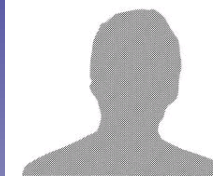
Copies are also available upon request from the Parish Office 792-1396

Your parish name | Parish Address | City State Zip Code | Phone number

# Parish Name Annual Report

*As you come to him, the living Stone—rejected by men but chosen by God and precious to him—you also, like living stones, are being built into a spiritual house to be a holy priesthood, offering spiritual sacrifices acceptable to God through Jesus Christ. But you are a chosen people, a royal priesthood, a holy nation, a people belonging to God, that you may declare the praises of him who called you out of darkness into his wonderful light.*

—Peter 2:4-5, 9



What an extraordinary year in life our Church. With many changes have many examples of our faithful parishioners doing for Christ, what He has lovingly done for us. Our change to total stewardship has been a challenge, but you have graciously answered that challenge, in actions, through the generosity of your time talent and treasure. We have created this document to further display our love of God and His love of us.

*Fr. Your Name*

## Brothers and Sisters

So often we are caught up in the day-to-day workings of the parish that we do not notice the great impact we have on the lives of those in our parish family and also in our larger community of Dodge City. The process of compiling this annual report has provided us with an opportunity to reflect upon the past year’s continuing journey of faith in our parish, and in our work together in building the Kingdom of God.

As you review this account of a year in the life Our Lady of Guadalupe, you are invited to reflect upon your individual role, as well as the work and ministry of the entire parish. What is working an what is not working? Where do we need to put more effort? What has proven especially gratifying?

Let us give thanks to God for the many gifts He has given our parish family. Let us be mindful that we are the living union of Christ’s Church, the People of God. May we always be good stewards who wisely allocate our time, talent, and treasure in service to all.

## Our Life of Prayer and Worship

We are often reminded that the Eucharist is the

source and summit of our Christian lives. When we gather each Sunday, we receive everything we need to live out lives as Christians and also embrace that life. In this way we live our baptismal calling as “a holy priesthood to offer spiritual sacrifice.”

During the course of the past year, we at the Cathedral of Our Lady of Guadalupe have lived our life of prayer and worship in the following ways;

- We continued to bring young people closer to the Liturgy with Masses geared toward different age groups. Twice a month on Sunday mornings we celebrated the Liturgy of the Word for Children. At that Mass, the readings were designed to help children more fully participate in the Liturgy and to better grasp the Word of God at their level.
- Our liturgical ministers extraordinary ministers of Holy Communion, lectors, servers, ushers, sacristans, musicians, and Children’s Liturgy of the Word leaders—dedicated countless hours of service to our liturgical assembly. Many participated in training session and ongoing formation programs organized by the parish and the diocese.
- Our perpetual adoration chapel continues to grow. Over 300 individuals and families spend one hour a week in prayer with our

Your parish name | Parish Address | City State Zip Code | Phone number

Lord, 24 hours a day, 7 days a week. This especially highlights our faith and desire to spend time with the risen Lord.

- 200 children were baptized in our parish, with their parents and godparents participating in significantly expanded parish outreach before and after baptism.
- 72 couples were married at Our Lady of Guadalupe, taking on a new responsibility to live out the vocation of marriage as a witness to Christ in the world. A new marriage preparation program for engage couples was added to our parish's programming.
- 300 Children received our Lord through



First Eucharist. Both parents and the children learned the meaning and teachings of the church together in our wonderful classes held weekly throughout the year.

- 295 children received the sacrament of First Reconciliations. Parents Grandparents, family and friends witnessed this Holy sacrament bringing these young people deeper into the church.
- Our dynamic RICA team welcomed 23 In-



dividuals and 4 families into full communion with the church this Easter. What joy for our church to see so many people eager to discover the truth of the Catholic Church.

- Our youth efforts trained 138 young men and women how to carry on their faith into adulthood These youth of our parish went on to receive the sacrament of Confirmation performed by Bishop Gilmore.



- 45 Young ladies participated in Quincienaras. This wonderful right of passage champions a young Hispanics transitions into adulthood.
- 155 of our brothers and sisters joined our Heavenly Father in heaven. Our bereavement team makes special efforts to console and with the families our parishioners in this difficult time of sorrow.
- Our annual stewardship renewal resulted in 7 new ministries, including financial management classes, wills and estate planning seminar, and monthly MOMS dinner.
- Our stewardship ministry fair brought the entire parish our for education of our wonderful ministries and refreshments. Over 87 new people answered God's call ministry in our parish.

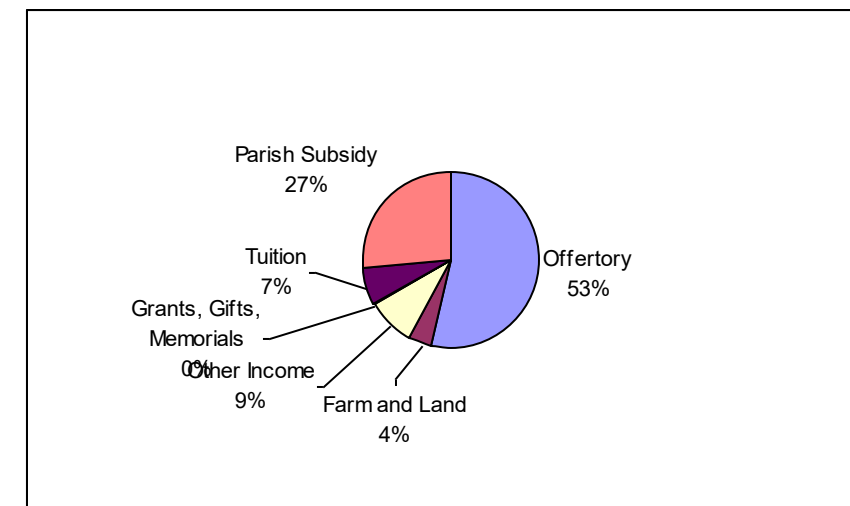
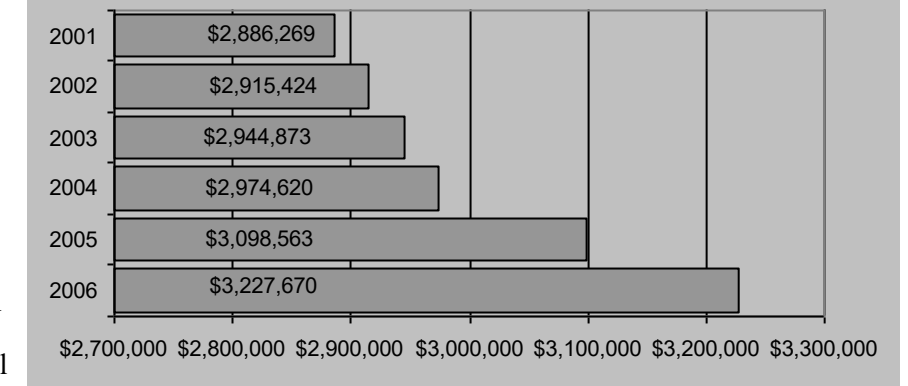
## Financial Overview

Brothers and Sisters, on page 1 and 2 your generosity was highlighted. It is evident many answer God's call giving countless hours of our time and talent to the Lord. Your generosity of treasure is highlighted in the section. We are pleased to provide you with Our Lady of Guadalupe's parish financial report for the year ended June 30, 2007.

## Snapshot on Income

2006 and 2007 have proven to be an exciting point in the history of Our Lady of Guadalupe. After thoughtful consideration and prayer, it was chosen to move from tuition based education to total stewardship. Every Catholic parent who chooses to send their child to Sacred Heart School will do so without tuition. There is income noted for tuition for 2007/2008, this represents non Catholic students attending Sacred Heart.

Your parish financial data can be presented in a simple story format that will be read. A full financial report can made available on the parish website or mailed out upon request. The goal is tell the whole story, to speak to the hearts parishioners.



For a complete set information, please our web sight [www.pariahwebsite.com](http://www.pariahwebsite.com)

of financial reference

2006/2007 Actual						
Revenue Sources	Parish	School	Total	Budget 2006/2007	Variation	Budget 2007/2008
Offertory	1,479,324		1,479,324	1,461,050	18,274	1,797,430
Farm and Land	114,491		114,491	92,000	22,491	120,000
Other income	56,325	186,495	242,820	243,900	(1,080)	221,460
Grants, Gifts, Memorials	(2,765)	12,470	9,705	18,000	(8,295)	14,200
Tuition		187,058	187,058	221,200	(34,142)	30,000
Parish Subsidy		737,609	737,609	746,750	(9,141)	1,044,180
<b>Total</b>	<b>1,947,375</b>	<b>1,123,632</b>	<b>2,771,007</b>	<b>2,782,900</b>	<b>(11,893)</b>	<b>3,227,270</b>